

*'A united, thriving and admired community.....  
.....a great place to live, work and visit'*



## COMMUNITY ANNOUNCEMENTS

### YACKANDANDAH COMMUNITY PLANNING NEW DATE

The Yackandandah Community Strengthening Project is entering an exciting final phase and we encourage you to have your say about what projects we could undertake to keep the Yackandandah community thriving, healthy and active, and keep businesses and tourism thriving. The new date for the Yackandandah Community Planning meeting is **Wednesday 9 February from 7pm at the Yackandandah Sports Park**. You will have the opportunity to prioritise ideas that have been collected in surveys and meetings with community members and groups in recent months. For further information, contact Scott Landells on 02 6028 1147 or Megan Randall on 02 6028 1151. The Shire also has a Local Call number 1300 365 003. Alternatively email [slandells@indigoshire.vic.gov.au](mailto:slandells@indigoshire.vic.gov.au) or [mrandall@indigoshire.vic.gov.au](mailto:mrandall@indigoshire.vic.gov.au).

### EMERGENCY MARKER PROJECT – LAUNCH

You are invited to help launch the ESTA / CVGT 000 Emergency Marker Project, a collaborative project between Indigo and Alpine Shires and the Rural City of Wangaratta to install emergency markers on the iconic Murray to Mountains Rail Trail, North East Victoria. The event will be held this Friday 4 February 2011 with morning tea from 11am at the former Beechworth Railway Station site, Railway Ave, Beechworth. For more information or to RSVP, please contact Susan Bull 03 5722 0775 or [s.bull@wangeratta.vic.gov.au](mailto:s.bull@wangeratta.vic.gov.au).

### TEMPORARY CLOSURE OF PUBLIC TOILET - FIG TREE PARK

Residents and visitors are advised that the public toilet at Fig Tree Park, Rutherglen, will be closed for construction work for the next 16 weeks. Alternative facilities are available within walking distance at Apex Park and at Lions Park. Council apologises for any inconvenience.

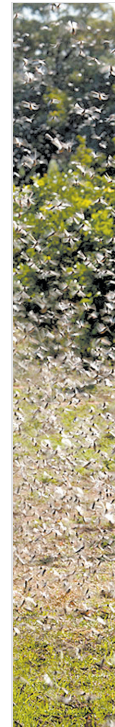


### LOCUSTS HATCHINGS

It is expected that another locust plague will swamp the region with hatching in Victoria, southern NSW and the Riverina region. Landholders and managers have a responsibility to treat locusts on their properties, and when hatchings begin, it is very important for them to report hatchings and/or egg-laying to the DPI locust hotline on 1300 135 559.

It is important to stay safe when driving. Locusts can reduce your ability to see the road and oncoming traffic and block your vehicle's radiator.

**To prepare for a trip and possible encounters with locusts, it's advisable to:**



- add some specially formulated insect cleaning agent to the windscreen washer system
- attach an insect screen on your external radiator air-inlet for extra protection (not green)
- pack a bag with spare water and extra insect cleaning agent and cloths/rags/brush (for your windscreen)
- make sure you keep your headlights clean.

**If you are having trouble seeing the road because of the locusts:**

- slow down, continue driving carefully and stop when it is safe
- turn on your headlights
- traffic coming from the opposite direction will also have reduced visibility
- use your windscreen wipers to clear locusts from your windscreen
- monitor temperature gauge on your dashboard – dead locusts can reduce air flow to an engine and cause overheating
- pull over & use cleaning agent and cloths/rags to remove residue from windscreen, wipers headlights and radiator air-inlet.

Check the Department of Primary Industries website for the latest locust information at [www.dpi.vic.gov.au/locusts](http://www.dpi.vic.gov.au/locusts) or call the DPI Locust Hotline on: 1300 135 559.

### DRAFT ROADSIDE MANAGEMENT ON PUBLIC EXHIBITION

Council's Roadside Management Plan ensures that roadside activities occur without impacting on the natural features of roadsides. The plan was adopted in 1999 and updated in 2004. Over the past year specific projects have occurred in preparation for another update. These works have included:

- Resurveying and mapping of original high conservation roadsides
- A project that engaged interested landholders with roadside frontage, called the Landholder Engagement Program.

The update has reviewed the original management actions and priorities for the next three to five years as well as ensuring, where possible, that the document aligns roadside activities with current legislation and policies. This updated draft was adopted at the December 2010 Council meeting and is on public exhibition until **Monday 7 February 2011**.

You can view the Plan at Council service centres and it is also available for download at our new website [www.indigoshire.vic.gov.au](http://www.indigoshire.vic.gov.au).

Alternatively a hard or electronic copy of the plan can be supplied on request by contacting Team Leader Natural Resources Shay Simpson on 02 6028 1128 or email [ssimpson@indigoshire.vic.gov.au](mailto:ssimpson@indigoshire.vic.gov.au).

Submissions on the plan can be made either in writing or via **consultation during January**. If you are interested in a consultation to provide a submission please phone Shay Simpson to arrange a time.

### COUNCIL MEETINGS & COMMUNITY FORUM 2011 SCHEDULE

| Date                  | Venue                    | Meeting                                       | Time   |
|-----------------------|--------------------------|---|--------|
| Tuesday<br>8 February | Stanley Hall,<br>Stanley | Council<br>Meeting                            | 3.00pm |
| Tuesday<br>8 February | Stanley Hall,<br>Stanley | Community<br>Forum (light<br>supper provided) | 6.30pm |